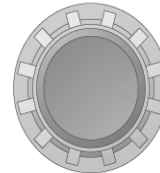
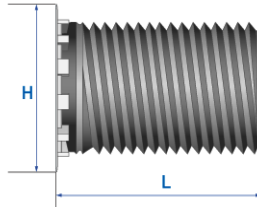


Clinching Bolt

Head Type / Platform Type	Flush Head / Knurled Platform
Material	Steel
Finish	Zinc Plate



H= Head Diameter
L = Body Length

*Dimensions in millimeters

Thread Size	H max.	Hole Size (+0.08)	Sheet Thickness min.	Dist. C/L hole to edge min.	Hole in mating part max.	Tightening Torque(Nm) rec.
M2	3.35	1.96	1.0	4.8	2.6	0.20
M2.5	4.05	2.47	1.0	5.3	3.1	0.41
M3	4.70	2.97	1.0	5.5	3.6	0.84
M3.5	5.30	3.48	1.0	6.4	4.1	1.02
M4	6.00	3.96	1.0	7.0	4.6	1.92
M5	6.70	4.98	1.0	7.0	5.6	3.84
M6	8.20	5.97	1.5	8.0	6.6	8.02
M8	9.90	7.97	2.0	9.5	8.6	13.50

Thread Size	Available Lengths(L)														
	6	8	10	12	14	15	16	18	20						
M2															
M2.5															
M3										25	30				
M3.5										25	30				
M4										25	30				
M5										25	30	40			
M6			8	10	12	14	15	16	18	20	25	30	40	50	60
M8				12	14	15	16	18	20	25	30	40	50	60	